

# PLANTA BAJA LETRA A

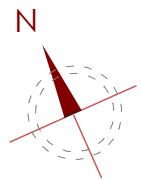
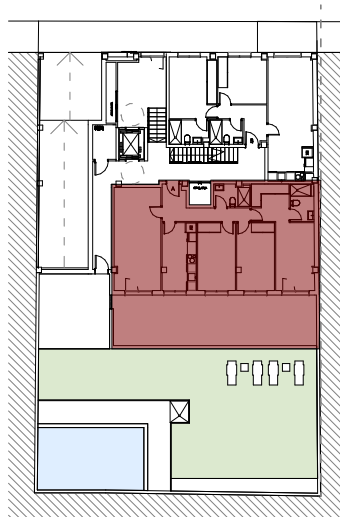
Salón - Comedor	20,90 m <sup>2</sup>
Recibidor	3,85 m <sup>2</sup>
Dist	3,80 m <sup>2</sup>
Aseo	3,50 m <sup>2</sup>
Baño	3,85 m <sup>2</sup>
Habit.1	17,65 m <sup>2</sup>
Cocina	10,10 m <sup>2</sup>
Habit.2	11,10 m <sup>2</sup>
Habit.3	11,25 m <sup>2</sup>

TOTAL SUP. ÚTIL CERRADA : 86,00 m<sup>2</sup>

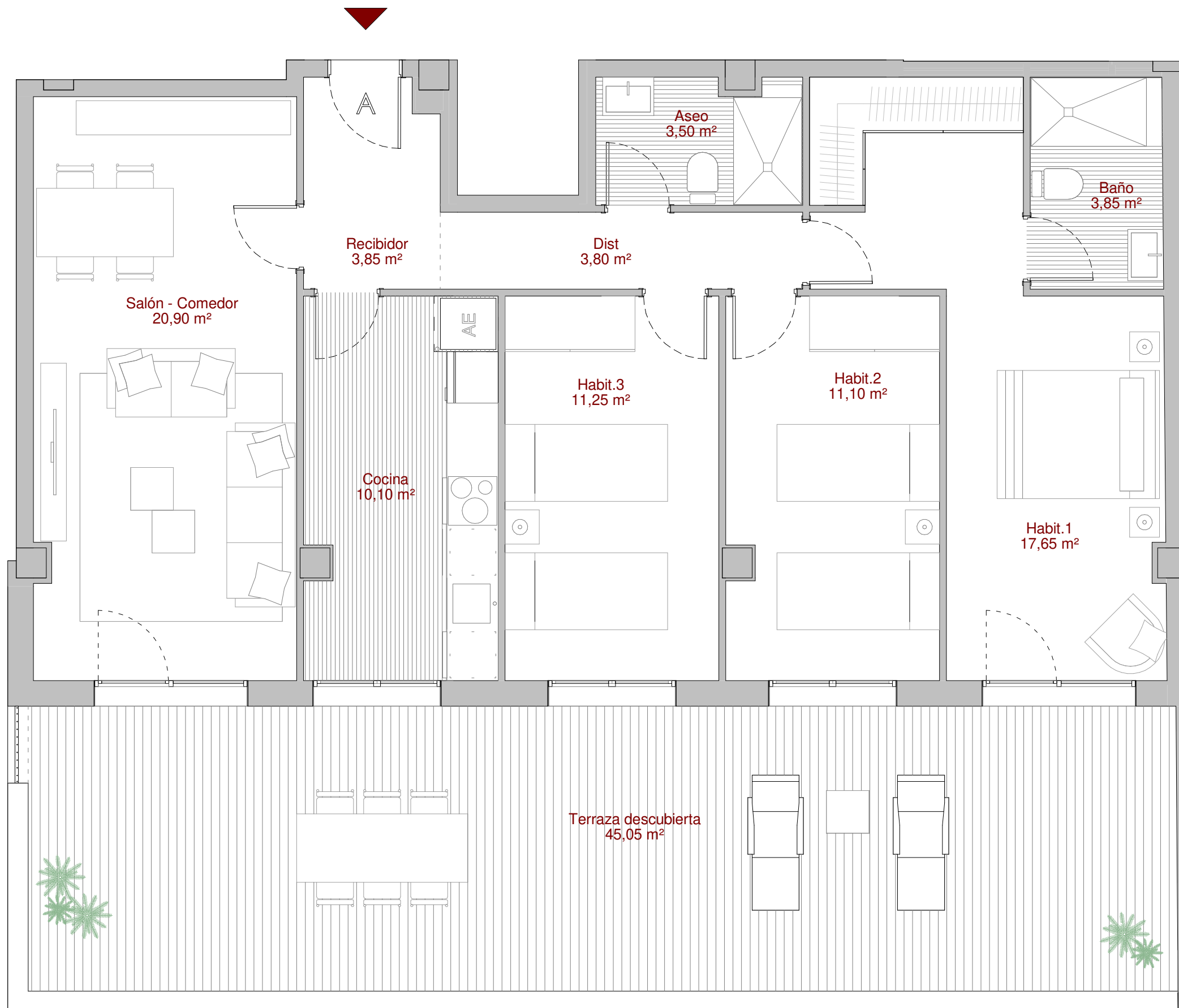
Terraza descubierta 45,05 m<sup>2</sup>

TOTAL SUP. ÚTIL ABIERTA : 45,05 m<sup>2</sup>

**TOTAL SUP ÚTIL : 131,05 m<sup>2</sup>**

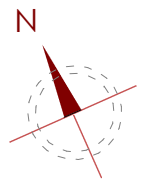
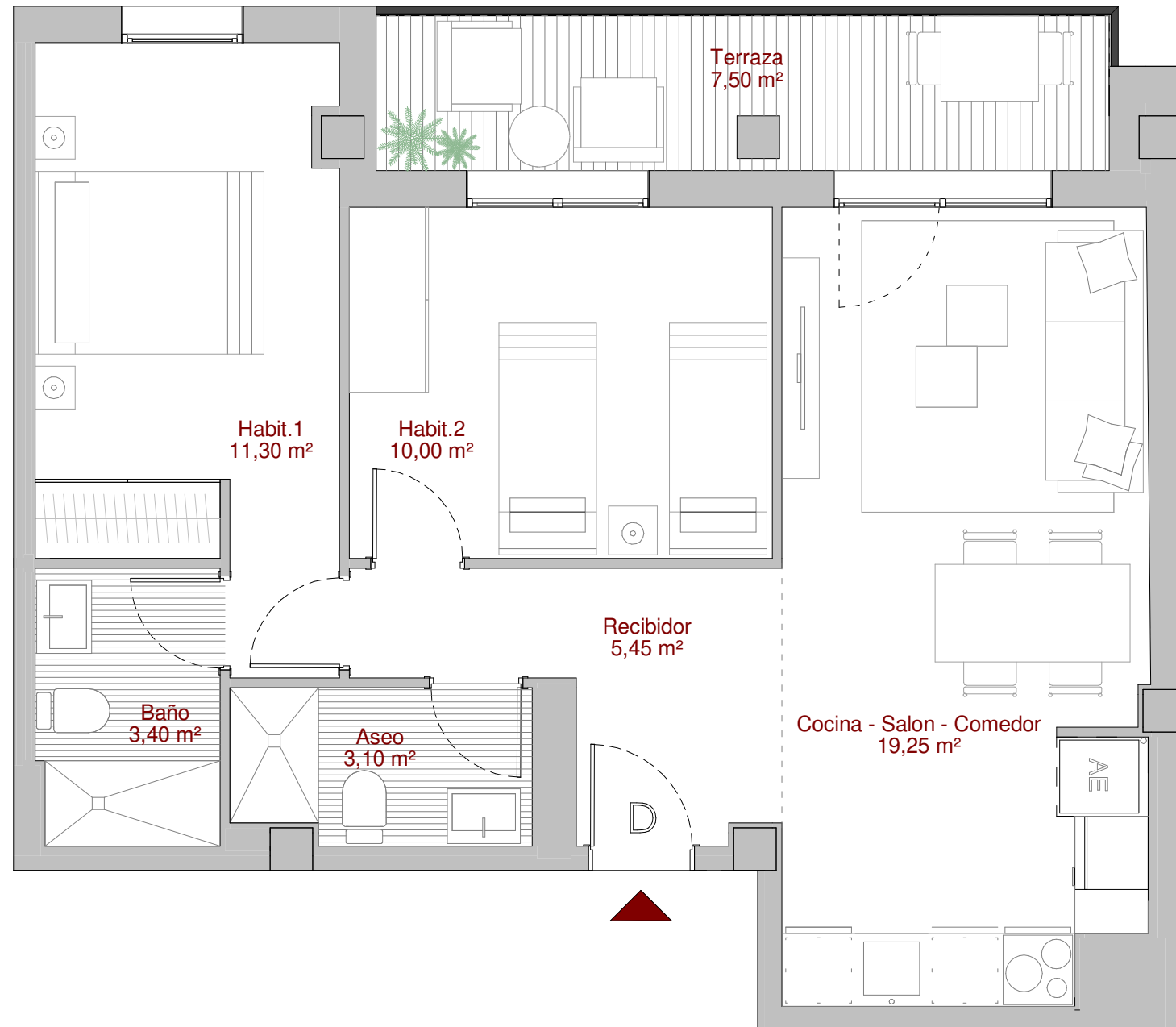
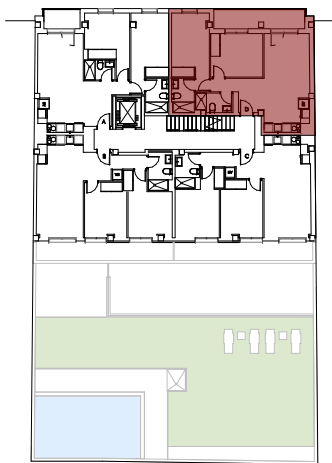


Escala 1:50



# PLANTA SEGUNDA Y TERCERA LETRA D

Recibidor	5,45 m <sup>2</sup>
Cocina - Salon - Comedor	19,25 m <sup>2</sup>
Habit.2	10,00 m <sup>2</sup>
Habit.1	11,30 m <sup>2</sup>
Aseo	3,10 m <sup>2</sup>
Baño	3,40 m <sup>2</sup>
<b>TOTAL SUP. ÚTIL CERRADA : 52,50 m<sup>2</sup></b>	
Terraza	7,50 m <sup>2</sup>
<b>TOTAL SUP. ÚTIL ABIERTA : 7,50 m<sup>2</sup></b>	
<b>TOTAL SUP ÚTIL : 60,00 m<sup>2</sup></b>	



Escala 1:50

